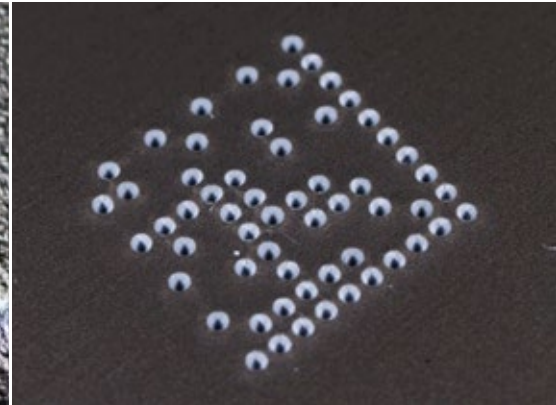




MARKING STATIONS  
DOT PEEN SOLUTION



**BENCHTOP RANGE**

# IMPACT

## DOT PEEN MARKING STATION



## TOUCH & MARK

Start marking the moment your machine is out of the box!

The IMPACT is a **totally standalone machine** with onboard traceability software.

Its intuitive touch interface makes it easy to configure and master. So it facilitates the development of a unique identification system for your workpieces and reduces the risk of error.

The IMPACT capitalises on long experience in the field of industrial traceability.



## I-SENSE

With the motorised Z axis, it has never been so easy to adjust the Z axis. The I-Sense function detects the surface of the workpiece, **automatically adjusts the height** of the Z axis and starts marking with no intervention on the part of the operator.

Several adjustment modes are available: automatic mode (I-Sense), programmable mode and normal mode, which allows manual adjustment by means of buttons located on the side of the machine.



## DYNAMIC DOT CONTROL

A perfect result every time!

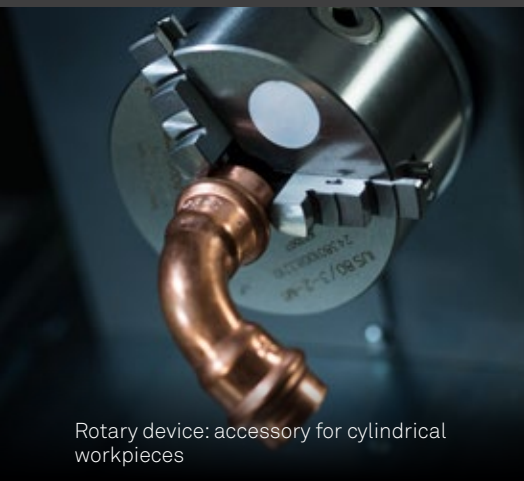
The IMPACT features DDC™ (Dynamic Dot Control) technology.

This enables **automatic adjustment of point density** according to the required size and depth of marking. Your markings are visible and of high quality, irrespective of your application. Two adjustment modes available: automatic and manual.

# TECHNICAL CHARACTERISTICS

## IMPACT

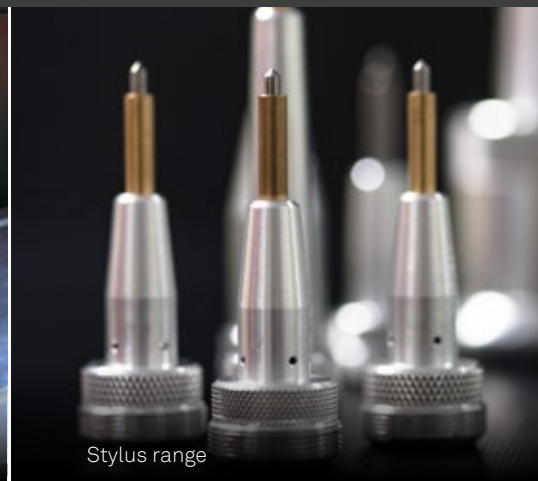
Marking field	100 x 120 mm
Technology	Pneumatic or Electromagnetic
Z axis	Motorised or Manual (basic version)
Z travel	300 mm
Character height	0.5 - 100 mm
Marking applications	Texts, logos, 2D codes (DataMatrix, QR codes etc.)
Communication	Ethernet TCP/IP, RS232, USB, FTP, dedicated Inputs/Outputs
Power supply	Universal: 100-240 V AC
Material hardness	≤ 62 HRC (marks most metals)
Weight & dimensions (L x w x h)	26 kg - 430.9 x 270 x 704 mm
Software	T08 - onboard software
Software functionalities	Serialisation - Automatic timestamping - Counters - Duplication control - Marking result preview - Link to a database (CSV, Excel, Access) - Marking history



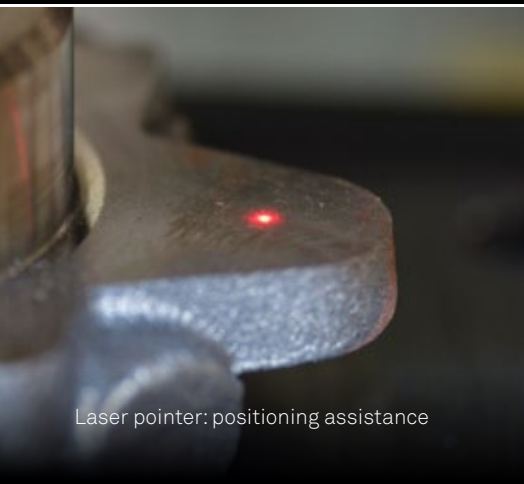
Rotary device: accessory for cylindrical workpieces



Hand-held scanner for instantaneous reading of markings



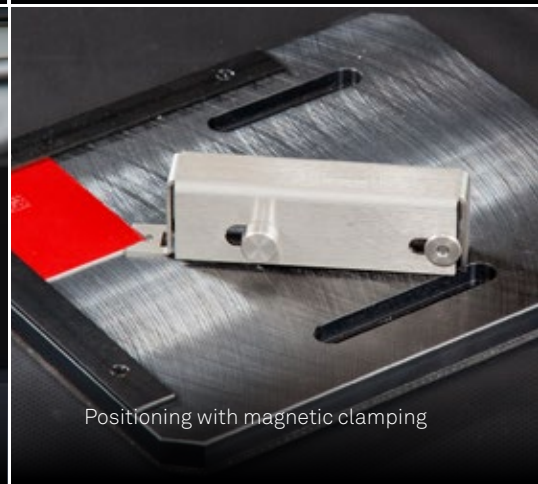
Stylus range



Laser pointer: positioning assistance



Protective bellow



Positioning with magnetic clamping



# FOR ALL MARKING

The IMPACT marking station meets all your identification needs, present and future:

- **Direct and permanent marking** : references, logos, serial numbers, dates, graphics and symbols, counters, graduations, DataMatrix codes etc.
- **Marking of plates in series** : automatic plate feeders (as an option).
- **Unique identifier and traceability** of every component and batch of workpieces.
- **Markings compliant with ISO**, automotive, aeronautical, military and defence standards etc.

“

The user is at the centre of our solutions: maximum simplicity and efficiency have been the watchwords in the design of this solution. Identification and traceability have never been so easy.

”

*Gérard Guyard - President*



## CONTACT US

TEL: +65.6795.2763

FAX: +65.6795.7913

E-mail : [sales@gravograph.com.sg](mailto:sales@gravograph.com.sg)

[www.technifor.sg](http://www.technifor.sg)



**Gravograph Singapore Pte Ltd**  
#07.128 18 @ Tradehub 21  
18 Boon Lay Way  
Singapour 609966



**GRAVOTECH**

